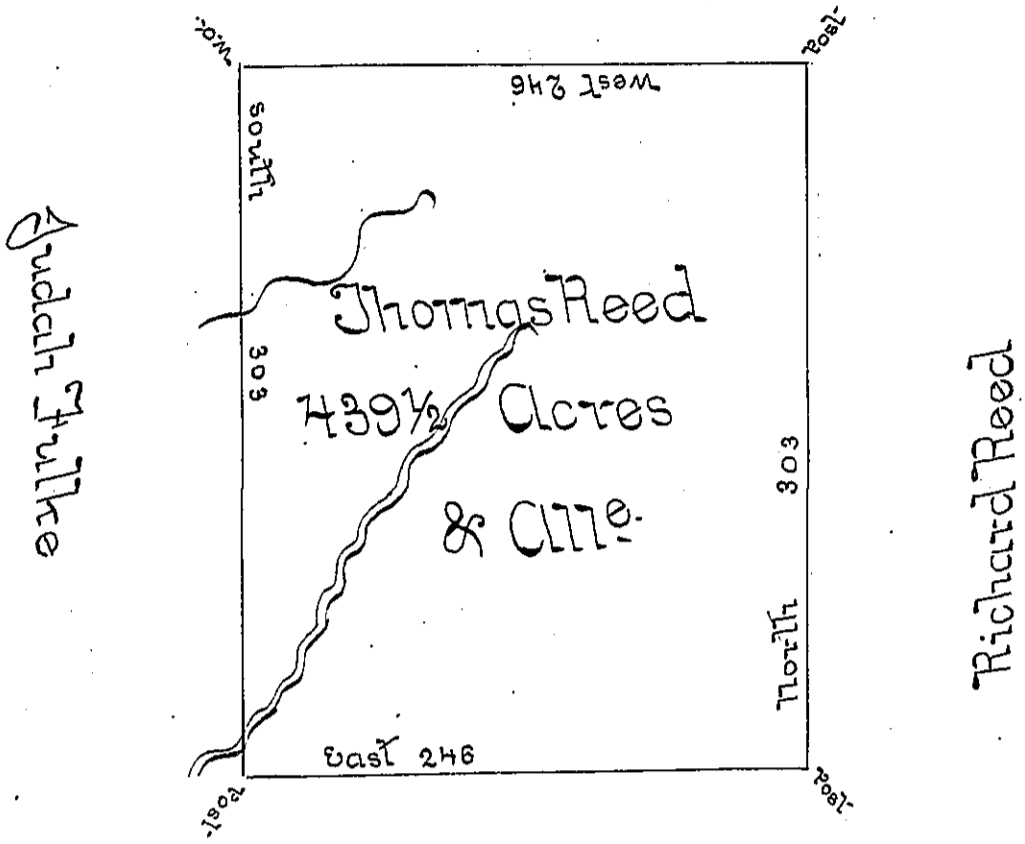


Timothy Reed



Samuel Reed

Situate on the Waters of Fifteen Mile Creek in Colerain Township Bedford County Containing 439 1/2 Acres with the usual Allowance of six P Cent for Roads &c & Surveyed the 21 day of October 1794 On Warrant dated the 21st day of February 1794.

George Woods Junr D.S.

To Daniel Brodhead Esqr S.S.

To Samuel Cochran Esqr
Surveyor General

Examined by me Decr. 16th 1808

John Anderson
Deputy Surveyor

IN TESTIMONY that the above is a copy of the original remaining on file in the Department of Internal Affairs of Pennsylvania, made conformably to an Act of Assembly approved the 16th day of February, 1833, I have hereunto set my Hand and caused the Seal of said Department to be affixed at Harrisburg, this

first day of October 1896

James W. Fatta
Secretary of Internal Affairs.